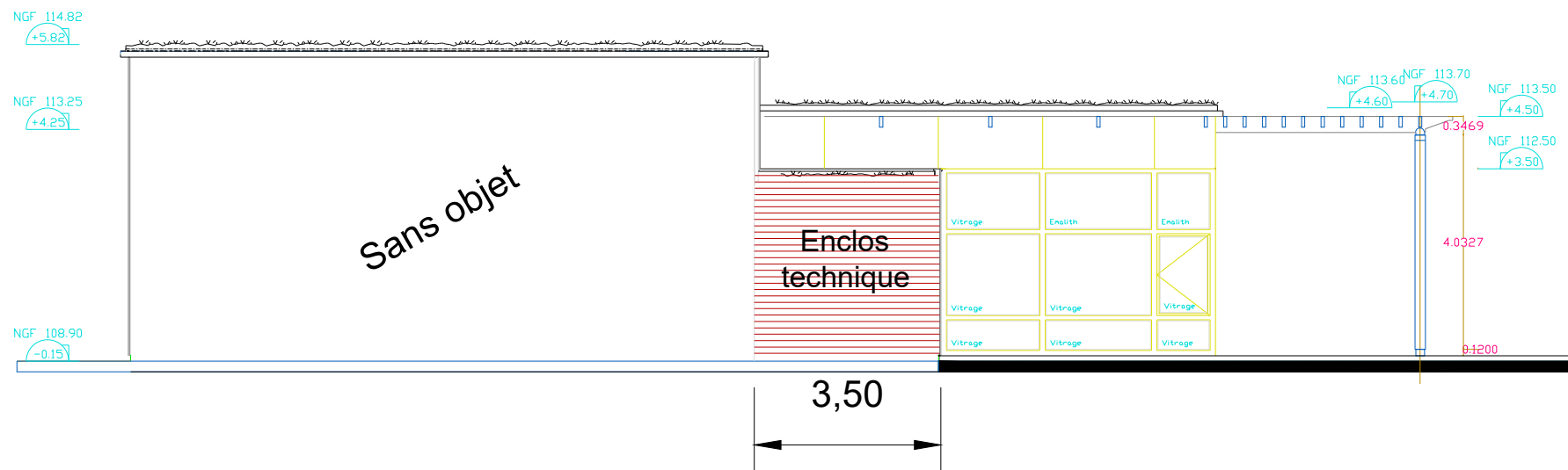
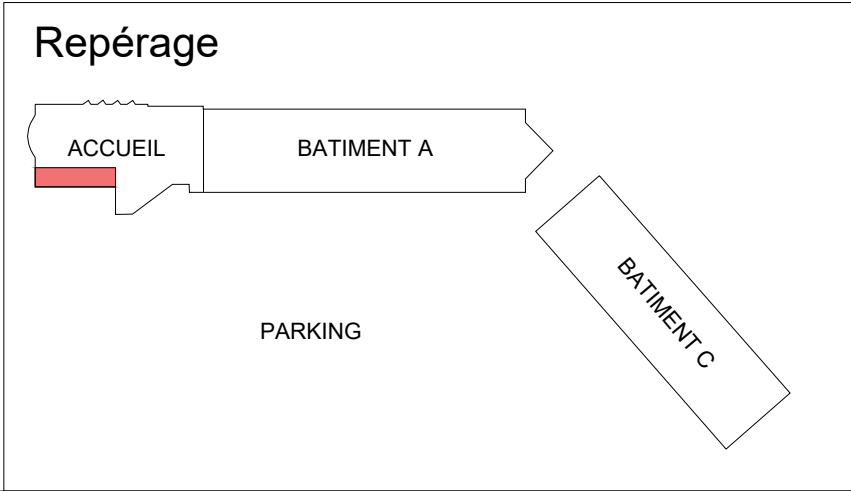
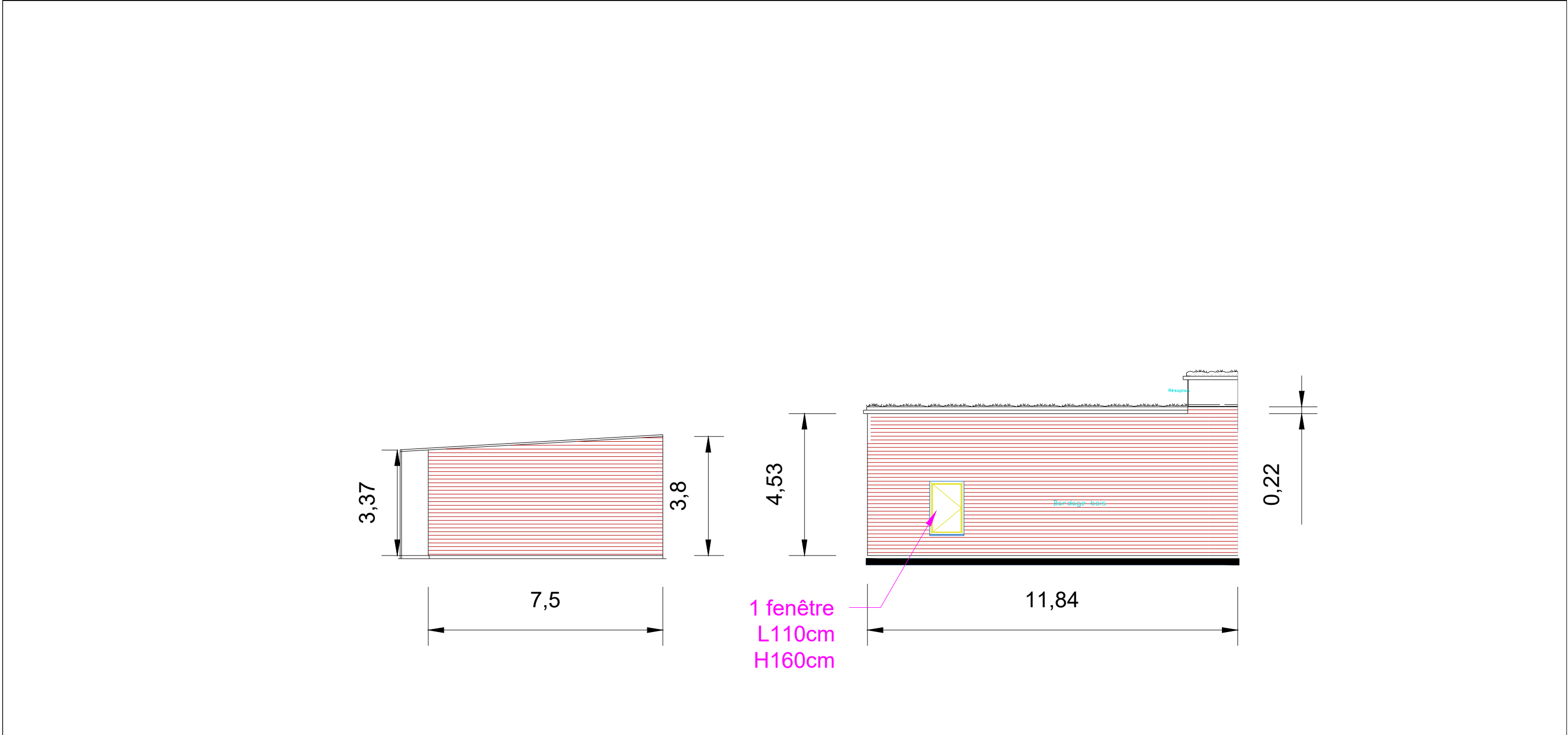


FACADE SUD BATIMENT ACCUEIL

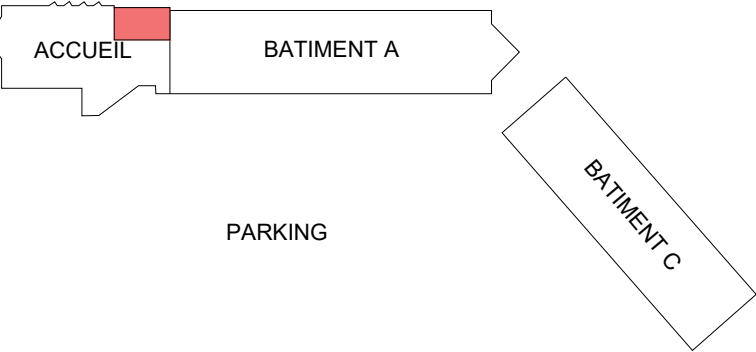


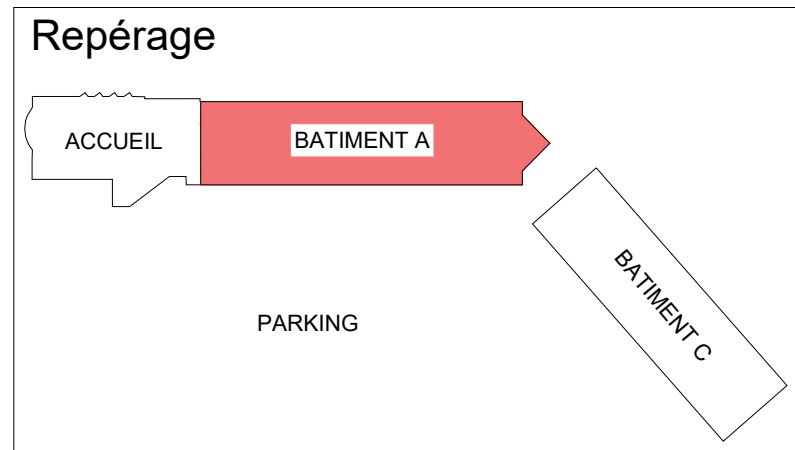
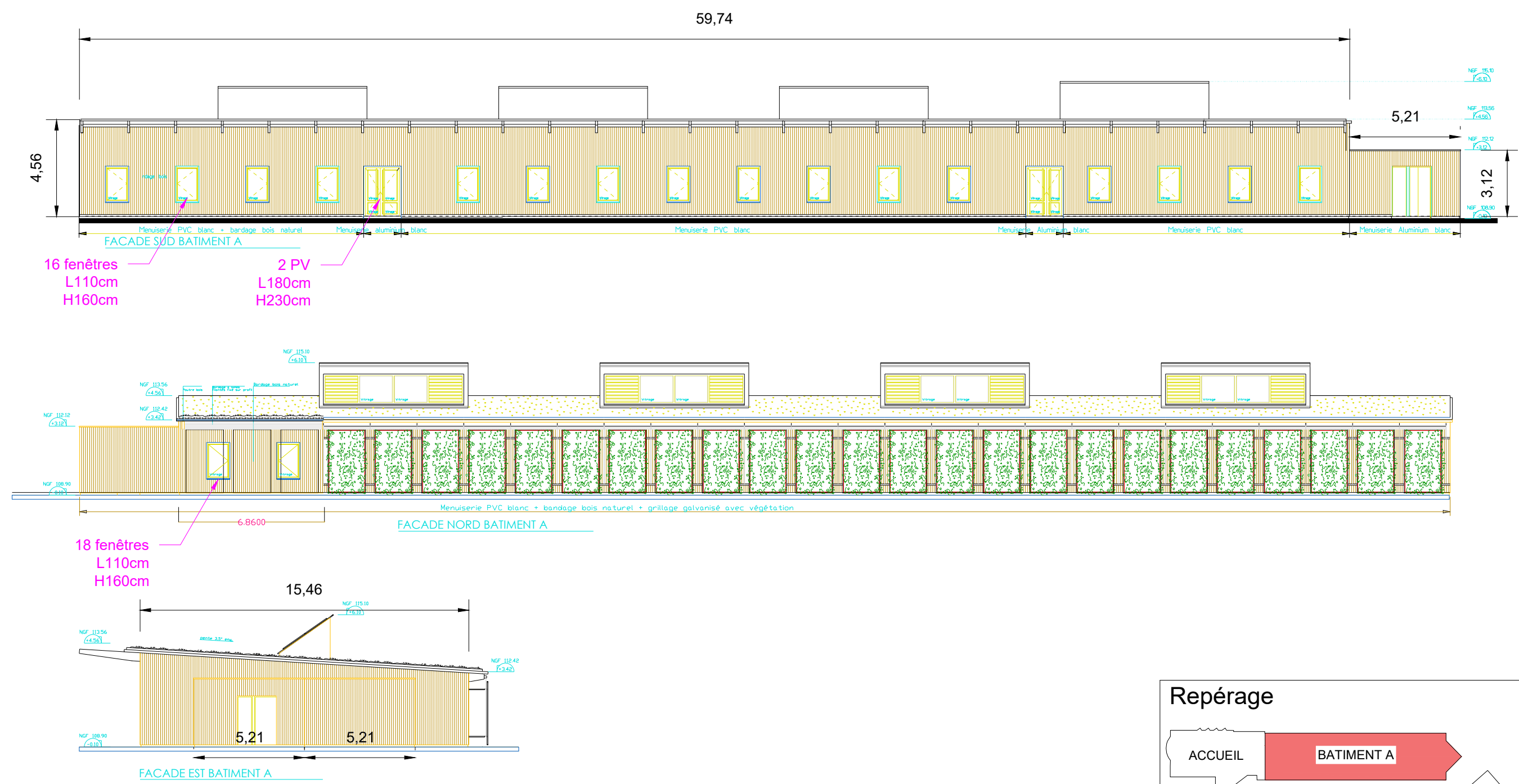
FACADE OUEST BATIMENT ACCUEIL

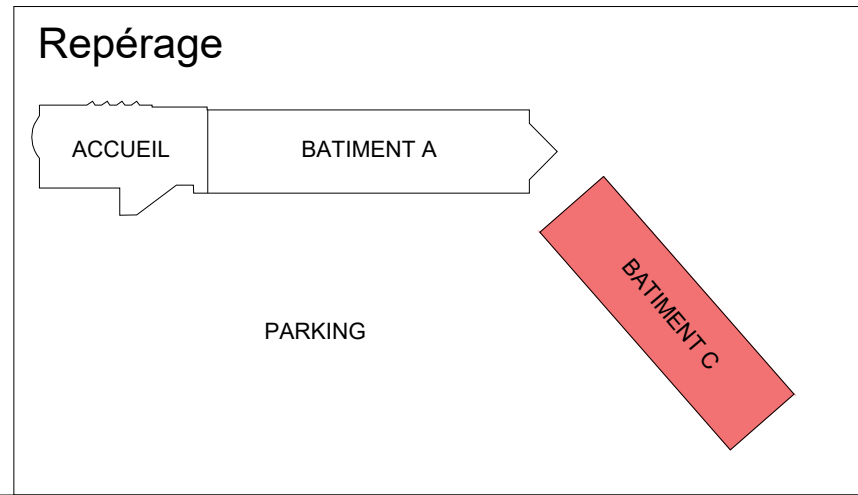
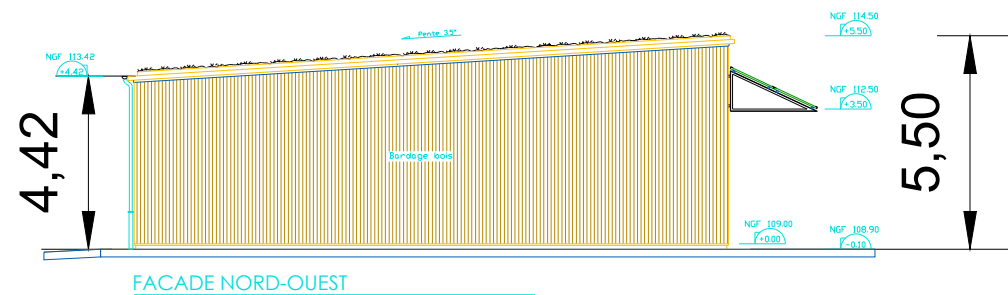
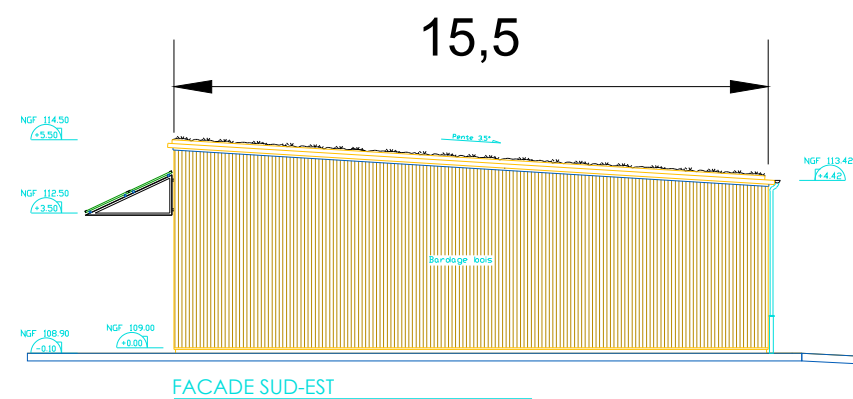
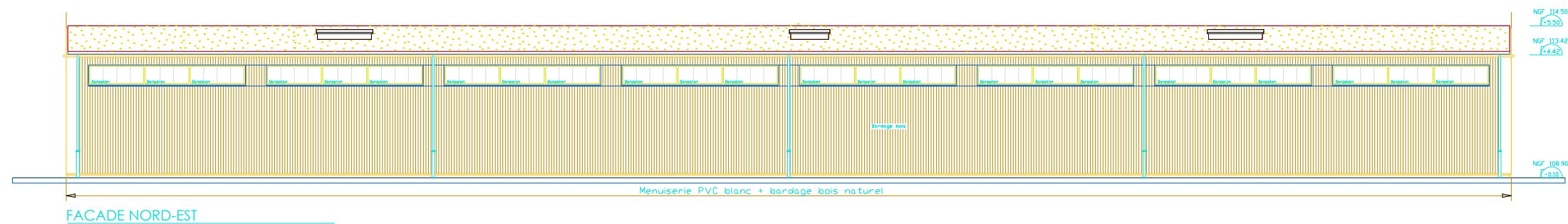
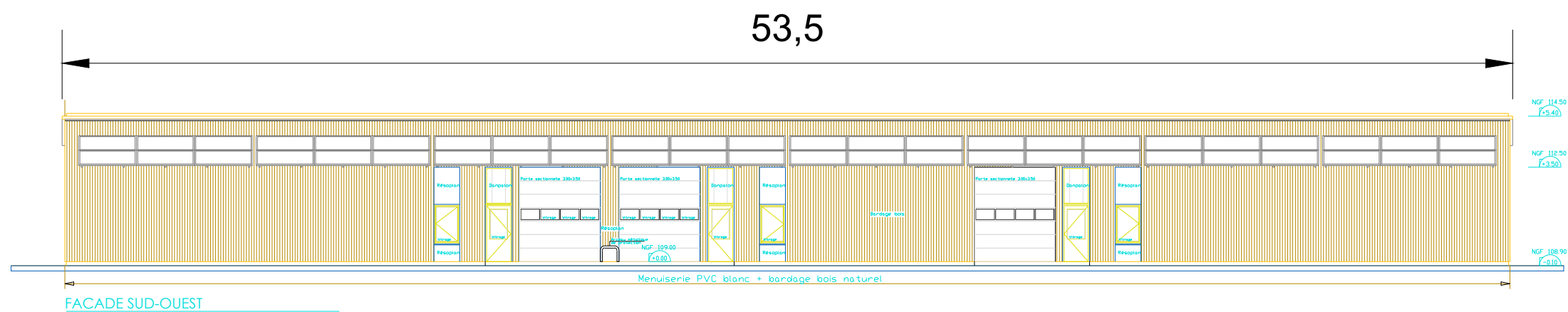


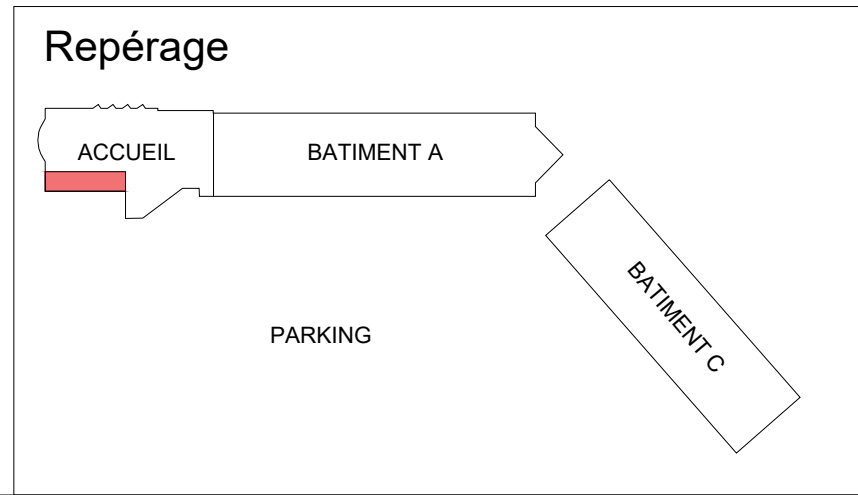
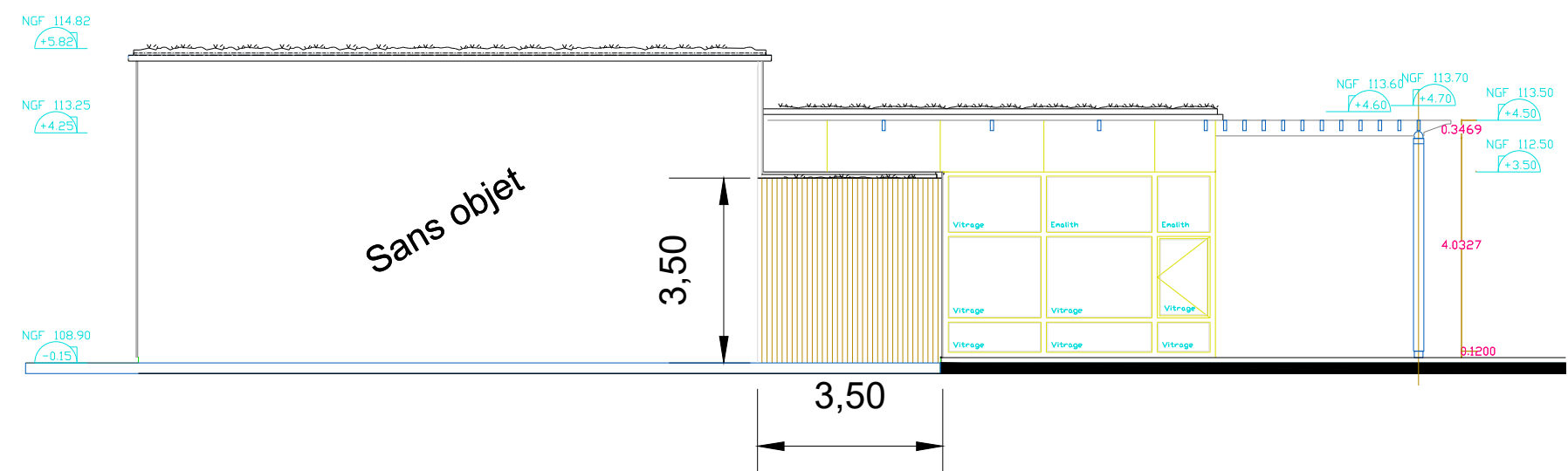
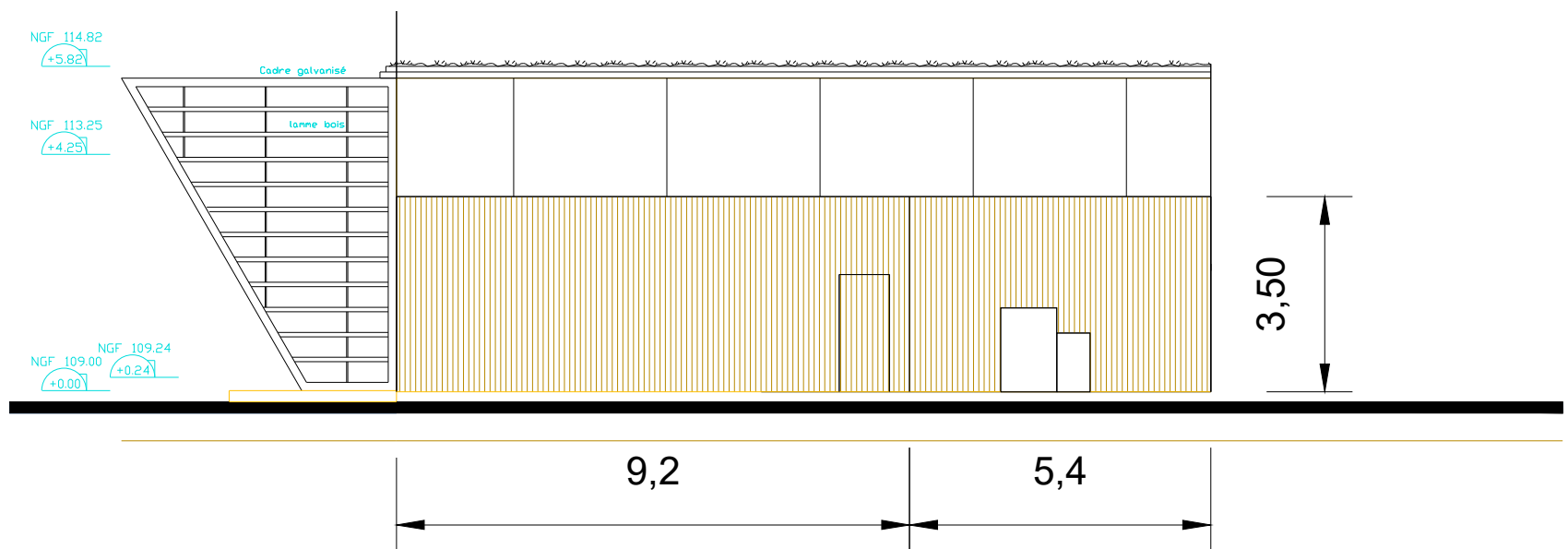


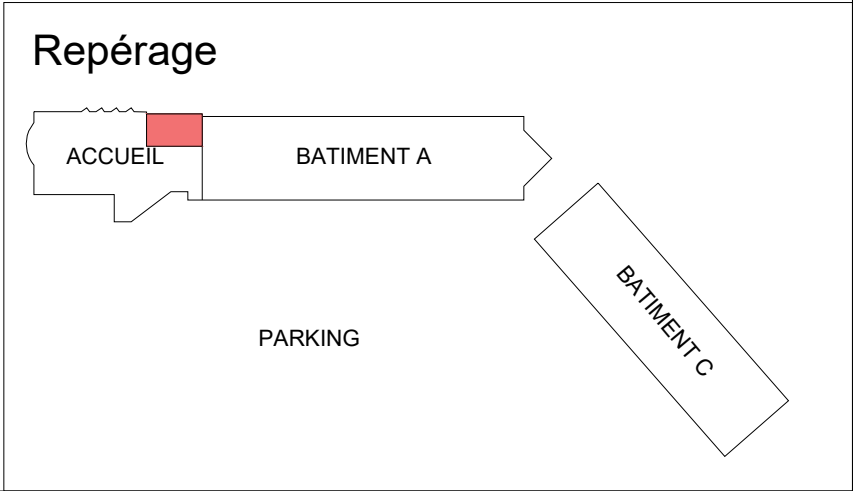
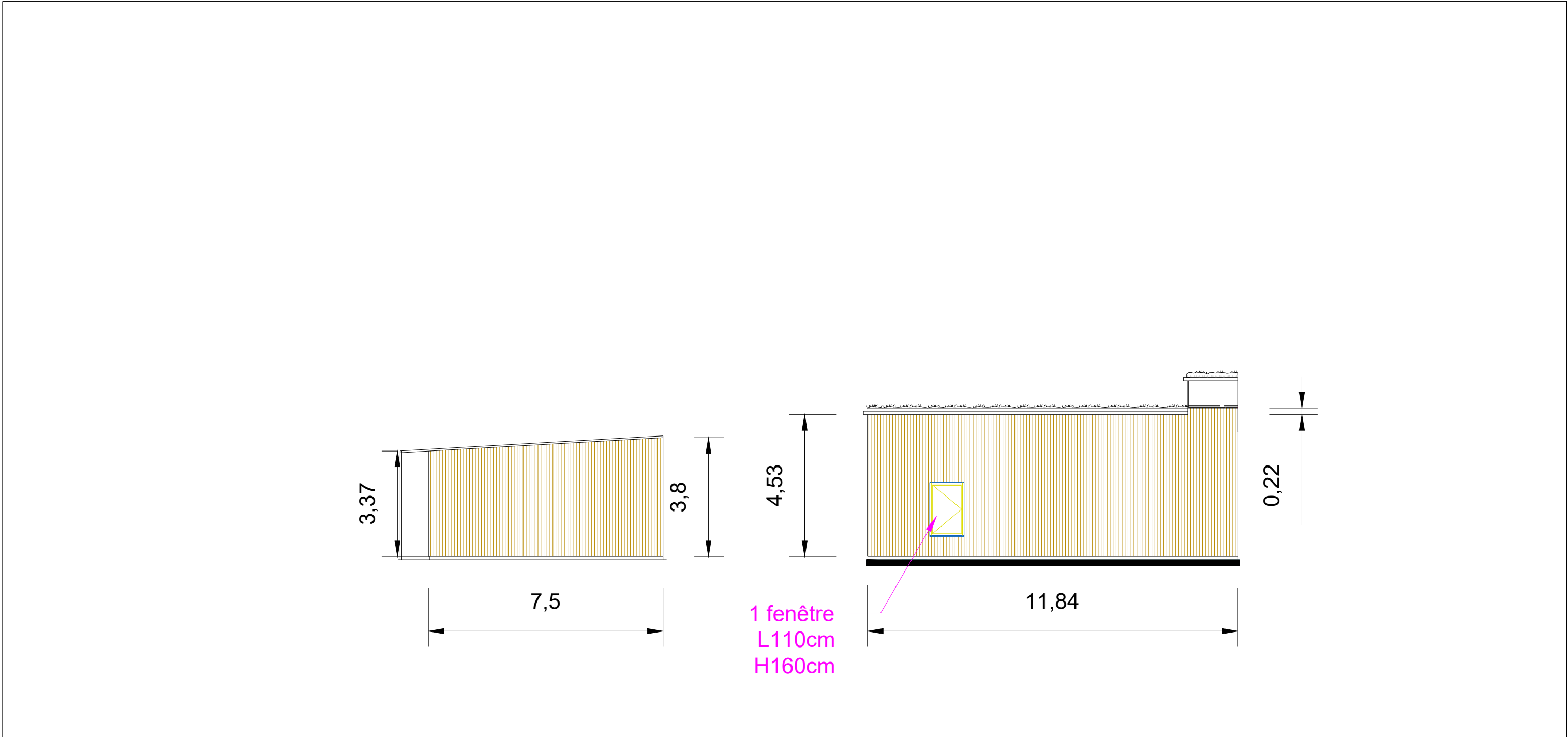
Repérage





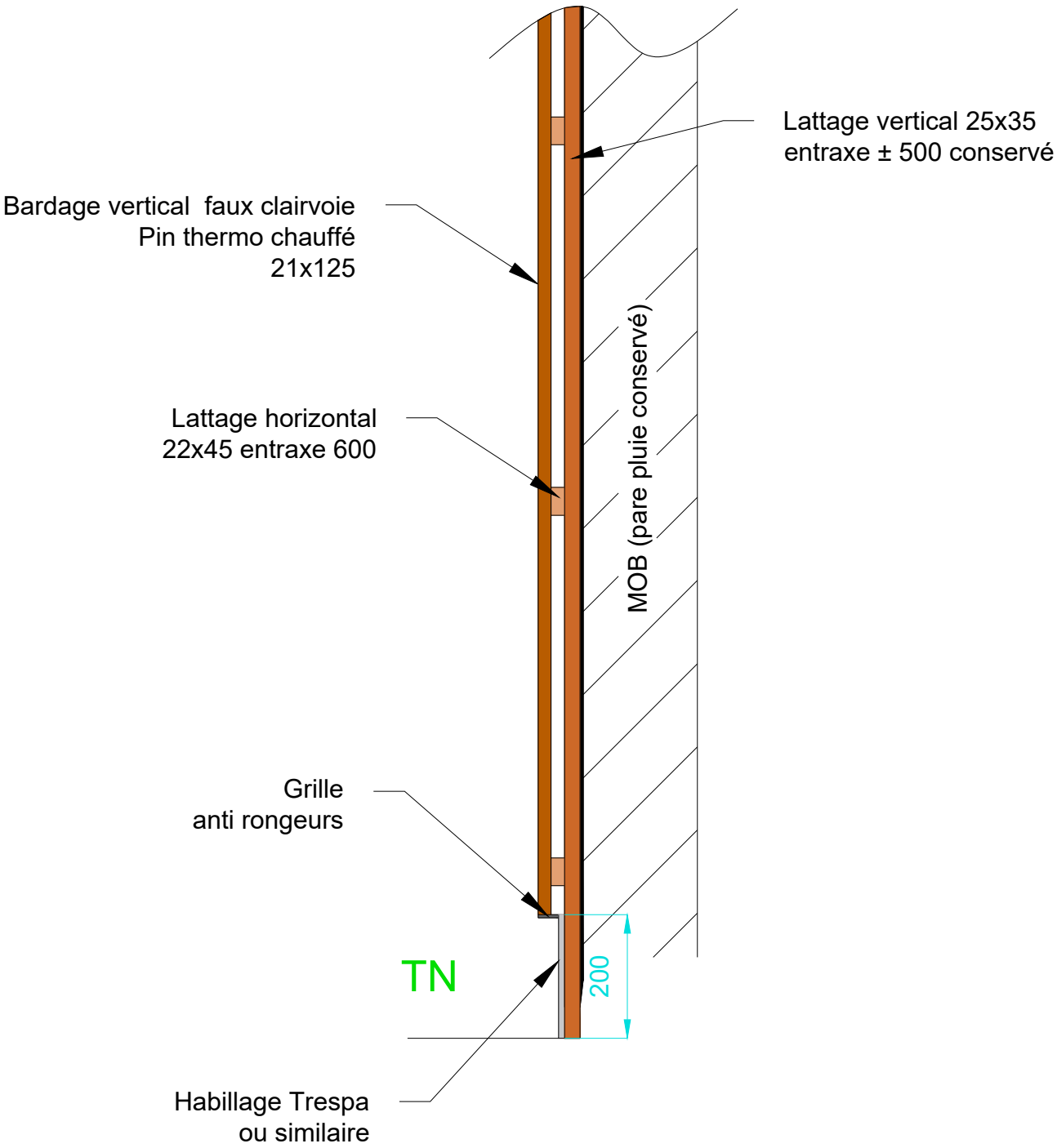




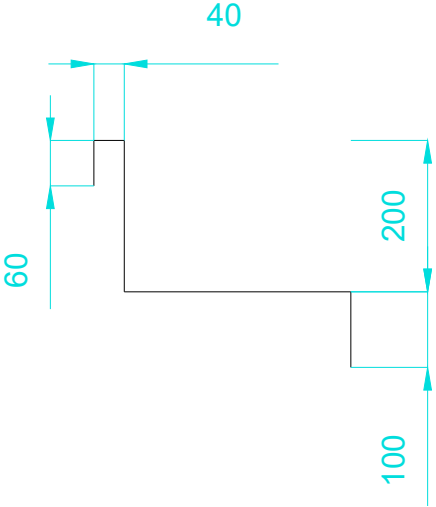


<div>AMOEX CONSEILS</div> <div>76 bd. Einstein - 62100 CALAIS www.amoex-conseils.fr</div>	<div>CCI LITTORAL HAUTS-DE-FRANCE</div>	Projet : Oust-Marest (80) - Carré des affaires des villes soeurs Remplacement du bardage	Description : Façades bâtiment Accueil (terrasse) Etat projeté	Phase : DCE	Dessinateur : JD	Date : 27/05/2025	Indice : A
					Vérificateur : HD	Format : A3	Echelle : 1:125

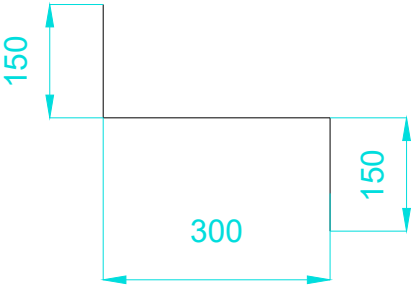
Coupe de principe bardage



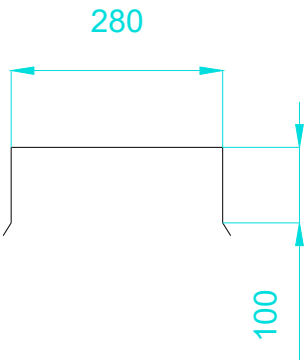
Couvertine partie courante



Couvertine entre local technique et bâtiment A



Couvertine local technique



Couvertine terrasse (côtes à relever sur site)

